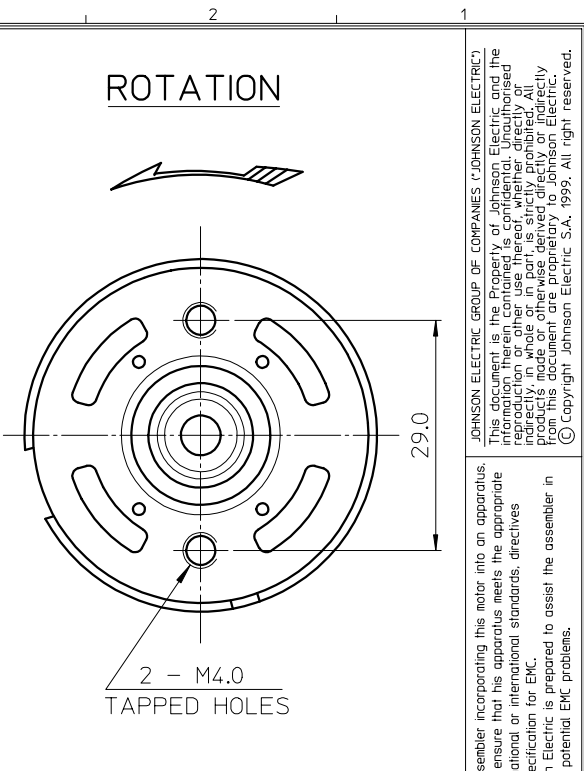
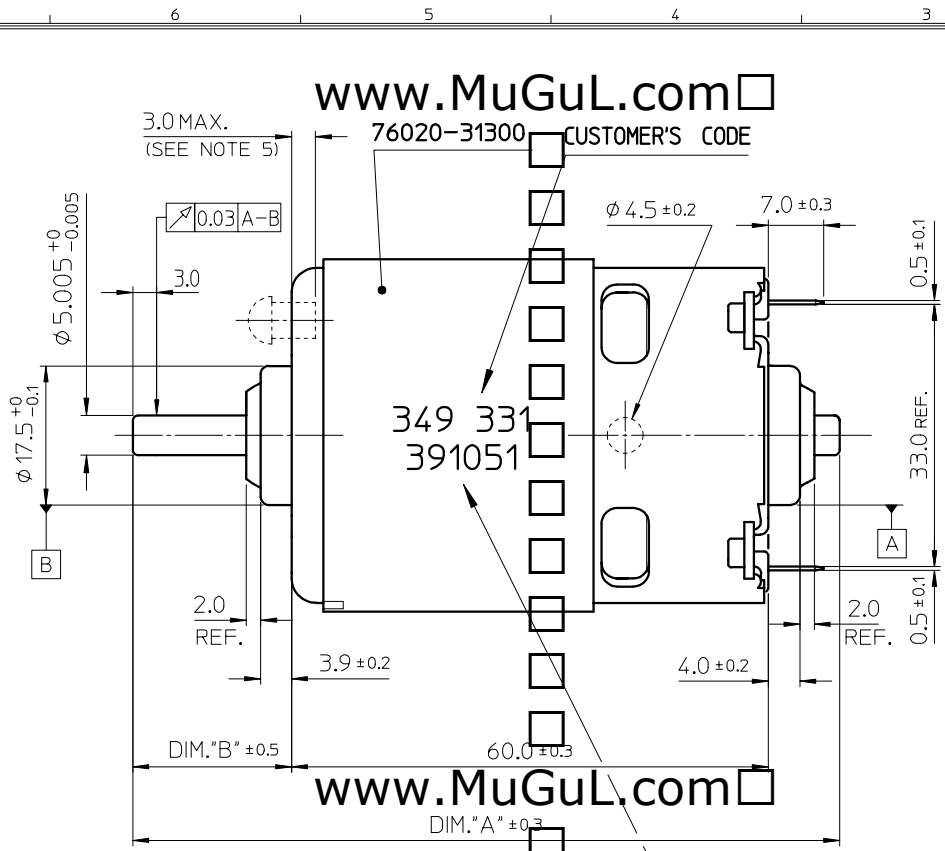


RED SPOT ADDED AT (+)VE SIDE



ROTATION

2 - M4.0 TAPPED HOLES

www.MuGuL.com

www.MuGuL.com

JOHNSON ELECTRIC GROUP OF COMPANIES (JOHNSON ELECTRIC)
 This document is the Property of Johnson Electric and the information herein contained is confidential. Unauthorised reproduction or use of this document is prohibited. All rights reserved. All products made or otherwise derived directly or indirectly from this document are proprietary to Johnson Electric. © Copyright Johnson Electric S.A. 1999. All rights reserved.

DIRECT PRINT CUSTOMER CODE & DATE CODE ONTO KEEPER RING. CHARACTERS ARE TO BE BLACK & NON-REMOVABLE OF MIN. HEIGHT 3.0 mm.
 DATE CODE FORMAT :
 FIRST DIGIT - STAND FOR LOCATION CODE e.g. 1 FOR P01 & P12 3 FOR 301, 8 FOR 801
 SECOND DIGIT - STAND FOR PRODUCTION YEAR e.g. 9 FOR 1999
 THIRD & FOURTH DIGITS - STAND FOR PRODUCTION WEEK e.g. 10 FOR 10th WEEK
 FIFTH DIGIT - STAND FOR WEEK DAY
 e.g. 0 FOR SUNDAY, 1 FOR MONDAY, 2 FOR TUESDAY, 3 FOR WEDNESDAY, 4 FOR THURSDAY, 5 FOR FRIDAY, 6 FOR SATURDAY.
 LAST DIGIT - STAND FOR LOT NUMBER

www.MuGuL.com

NOTES:-

1. LENGTH OF SHAFT, DIM.'A' 89.0 mm..
2. FRONT EXTENSION, DIM.'B' 20.0 mm., MEASURED WITH SHAFT PUSHED AGAINST STEEL END CAP.
3. DIRECTION OF ROTATION : ANTI-CLOCKWISE WHEN VIEWING MOTOR OUTPUT END WITH POSITIVE VOLTAGE APPLIED TO POSITIVE TERMINAL.
4. END PLAY : 0.50 mm. MAX..
5. TAPPED HOLES CAN ACCEPT MAX. MALE USABLE SCREW LENGTH OF 3.0 mm..

ALL DIMENSIONS ARE IN MILLIMETRES DO NOT SCALE DRAWING

C1	RE-CODING.	Tse	22/03/99
ALT. REF.	DESCRIPTION	BY	DATE
MATERIAL	FINISH	TOLERANCES 1 DEC. PLACE ± 0.15 2 DEC. PLACES ± 3 DEC. PLACES ± ANGULAR ± 2°	
TITLE (HC 783 G) MOTOR OUTLINE		SCALE 1.5 : 1	DATE 10/03/99
DWN. BY X.L.H.		CHK. BY	APP. BY
DWG. NO. 73300-99900		JOHNSON ELECTRIC ENGINEERING LTD. A JOHNSON ELECTRIC GROUP COMPANY. JOHNSON BUILDING, TAI PO, HONGKONG.	

A3



JOHNSON ELECTRIC ENGINEERING LTD.
A JOHNSON ELECTRIC GROUP COMPANY.
JOHNSON BUILDING, TAI PO, HONGKONG.

73300-99900

JOHNSON ELECTRIC ENGINEERING LTD.

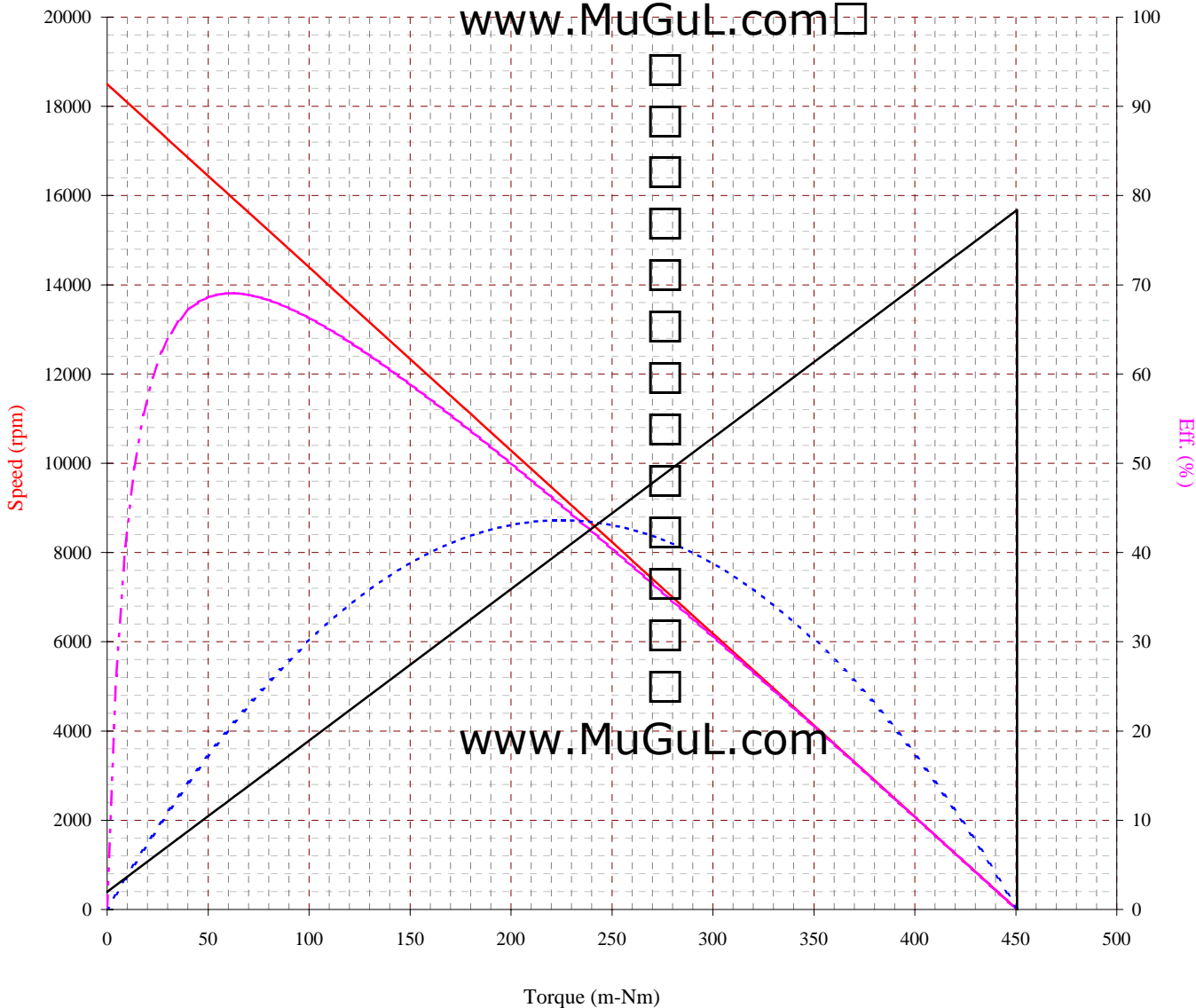
6-22, Dai Shun St., Tai Po Industrial Estate, N.T., H.K. Fax: 852-2663 6108

Project No : Production Motor
Curve No : HC783G-73300

Winding : 0.80 - 30

Date : 04/27/1999
Model :

Full Scales :
100.00 Amp
500.00 Watts



Motor tested rapidly to prevent significant temperature rise.

At a constant voltage of **12.00** Volts
with a circuit resistor 0.000 Ohm

(At the ambient temperature of 25~30 deg C)

www.MuGuL.com

At No Load
Speed : 18497 Rpm
Current : 1.973 Amp

At Stall (Extrapolated)
Torque : 450.60 m-Nm
Current : 78.40 Amp

At Maximum Efficiency
Efficiency : 69.06 %
Torque : 63.08 m-Nm
Speed : 15907 Rpm
Current : 12.67 Amp
Output : 105.00 Watts

www.MuGuL.com

At Maximum Power
Torque : 225.30 m-Nm
Speed : 9249 Rpm
Current : 40.19 Amp
Output : 218.06 Watts

Characteristics
Torque Constant : 5.8960 m-Nm/Amp
Dy. Resistance : 0.1530 Ohms
Motor Regulation : 41.0500 Rpm/m-Nm

COMPUTER PRINT-OUT
NOMINAL MOTOR CURVES.
Performance and characteristics are measured based on
limited motor samples only.

www.MuGuL.com

Reference no : 21627