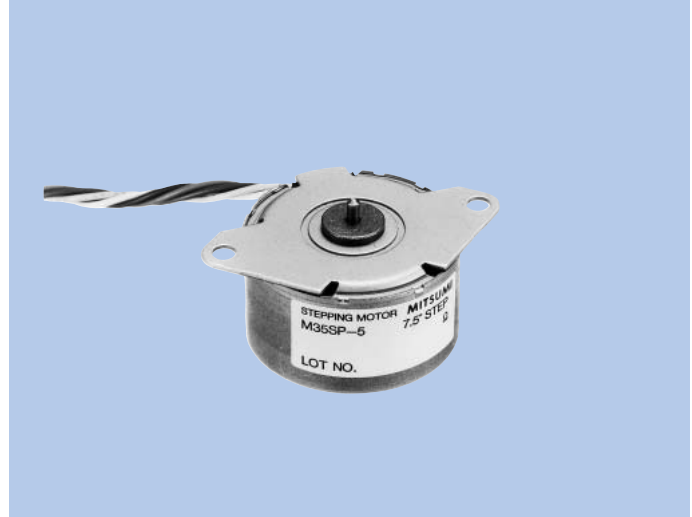


Stepping Motors M35SP-5

OUTLINE

"M35SP-5" with 7.5° of step angle which belongs to the 35mm outer diameter model series. MITSUMI can supply those motors with optimum voltage and current depending on driver (IC) to be used for the machinery and equipment.



FEATURES

1. Compact size and high output torque.
2. Superior running quietness and stability.
3. Step angle : 7.5°.
4. Excellent responsiveness acquired.

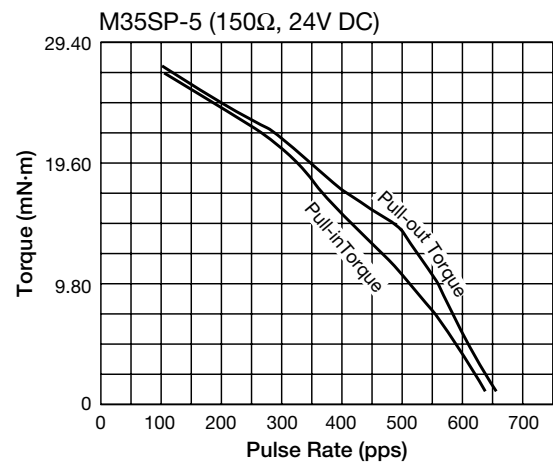
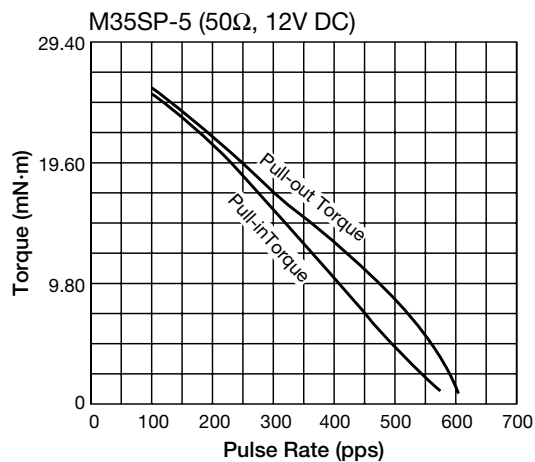
USES

Printers, multifunction machines, copy machines, FAX, and such.

SPECIFICATIONS

Items	M35SP-5	
Rated Voltage	DC 12V	DC 24V
Working Voltage	DC 10.8-13.2V	DC 21.6-26.4V
Rated Current/Phase	259mA	173mA
No. of Phase	4 Phase	4 Phase
Coil DC Resistance	50Ω/phase±7%	150Ω/phase±7%
Step Angle	7.5°/step	7.5°/step
Excitation Method	2-2 Phase excitation (Unipolar driving)	
Insulation Class	Class E insulation	Class E insulation
Holding Torque	34.3mN·m	38.2mN·m
Pull-out Torque	21.6mN·m/200pps	24.0mN·m/200pps
Pull-in Torque	21.1mN·m/200pps	23.5mN·m/200pps
Max. Pull-out Pulse Rate	610pps	675pps
Max. Pull-in Pulse Rate	600pps	645pps

CHARACTERISTICS



DIMENSIONS

