

# Digital video Recorder



## User Manual

### Quick Tour 1

#### Overview

Thank you for choosing our products. With the latest single chip embedded video monitoring system, this product has the functions of videoing, sound recording, motion detection, nighttime infrared monitoring, photosensitive induction, and circulating storage. Compared with traditional analog surveillance, it has the advantages of easy installation (do not need professional wiring), operation (directly plug in power to start working), and convenience of video data reading (all video files are named by the exact time) and so on. It is widely used in households, businesses, offices, supermarkets, schools, warehouses, shops, garages, and the facades of buildings, streets and other places that need monitoring. For better use of this product, please read this manual carefully. Any problems, please feed back to us or our distributors.

#### Product image



Note: Please check and format it every 2 to 3 months.

#### Product function & style

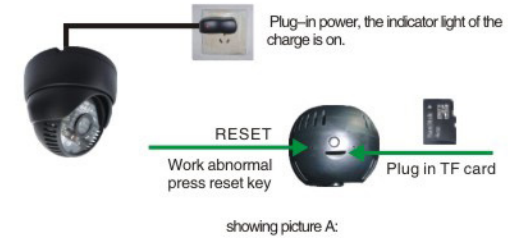
Local storage	Loop recording	Sound recording
3GP file layout	Video Format: 640 × 480	PC Camera function
MAX TF suport 16G	Infrared night-vision function	Media/mobile play

### Quick Tour 2

#### Configuration requirements of player system

1. No need to install the driver if your operating system is Windows XP 2000 or above;
2. Install "PC camera driver" of Windows 7 operating system; see the installation manual on the disk.

#### Use And Operation



#### Working description:

1. Connected to the external power supply (TF card is in normal use), system intelligence check and automatically get into the videoing mode (the blue light flashes after normally on for 5-8 seconds).
2. Connected to the external power supply (without TF card), the red LED light flashes; insert TF card correctly, blue and red lights become normally on; short press the " " button, then the blue light flashes after normally on for 5-8 seconds, it gets into the videoing mode.
3. System automatically create and save the file, every 30 minutes to be one file.  
LED: display status  
Video state: blue light flashes.  
Standby mode with TF card: blue and red light are normally on at the same time.  
Prompt for lacking of TF card: red light flashes.

### Quick Tour 3

#### Time update setting

1. Connecting it to the computer, system will find the "removeable disk"
2. Put the disk into the disk driver, then open "My Computer"
3. Press "update time and save the settings"
4. Double press the " " icon, waiting for the yellow light to be on, and the time update is finished, then the video time is agree with the system time.
5. Parameters of video: (default: CIF)  
CIF: 352\*288 (keeping small occupying)  
VGA: 640\*480 (keeping much large occupying)
6. Videoing files icon



#### TF card Reading:

In normal use, the yellow light flashes. If you want to read the date of TF card, please press the "stop" button for about 5 seconds, the yellow and blue light gets normally on, the video file is saved, then you can pull out the card.



under video mode, press the button to stop working and save the information until the yellow and blue light gets normally on.

Warning: No pull out the TF card when it is in videoing.

#### Review of the video:

1. Directly use USB: connect it to the computer
2. By card reader: to connect TF card with the computer.
3. Insert the TF card to the cellphone to play (commend to use Iphone4, E7-1)
4. Commend to use multi-format media player: stoms, flmpc and so on.

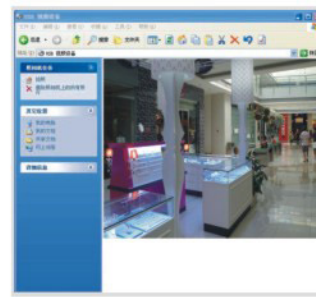
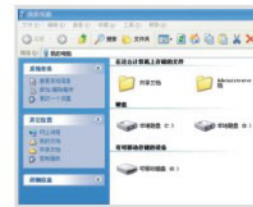


### Quick Tour 4

#### PC Camera Usage and Windows debugging

( If your operating system is Windows 7, please find the installation manual on the disk. )

Directly use USB to connect it to the computer, system automatically to find "removeable disk".



1. When install on the wall or the ceiling, by adjust the 120° rotate angle to find the needed screen.

by adjust the 120° rotate angle to find the needed screen.

2. After finding the video equipment, able to be used as a video chat tool

remote video chat tool

### Quick Tour 5

#### related parameters

Project	Function	Description
CPU	Micro processor	ARM9 32-bit Microprocessor core
	Encoding	MPEG4/3gp
Video	Signal System	Digital signal
	Resolution	VAG(640*480)
	S/N Ratio	48db
	White Balance/BLC	Auto
	Shot	3.6mm, 4mm, 6mm, 8mm
Storage	TF card support	Suggest to use kingston/Sandisk high-speed card
	Capacity	1G-16G
Night vision	Infrared night vision	Using the latest photographic technology photosensitive, 24 LED lights
Power	DC	Input: 220/110 V, Output: 5V/1A
Time	Real-time adjustment	support system automatically real-time adjustment
Usage	Scope	It can be widely used in households, shops, businesses, office, supermarkets, schools, warehouses, shops facade, garage, building, street and other places where need monitoring.

#### Notice

**Use:** Please strictly observe the relevant state law, not to use the product for other illegal Purposes, otherwise the consequences could own.

**Software upgrading:** For better serves, we will non-stop renew our software. For software upgrading please contact to the local distributor to get the newest one.

**Video illumination:** Please do not put the camera facing to the sun or related strong light source in case of the damage; use under the most efficient light source.

**Cleaning requirements:** Please do not used in a dusty environment to avoid dust contamination for the lens drain, and any other parts of the equipment; Camera lens can be clean by the paper or cloth, gently wipe the glasses, to keep products clean.

**Other matters:** Do not subject it to strong impact, shock, do not use in strong magnetic or electric field.